

# Built Before You Need It

## How SEI REMC prepares your electric system long before the lights ever go out

Most of the time, you don't think about your electricity.

The lights come on when you flip a switch. Appliances run without interruption. Your home stays comfortable through changing seasons. It's seamless, expected, and easy to take for granted.

But behind that reliability is a system that requires constant attention, planning, and care. The service you depend on every day isn't created in the moment—it's built over time through the work happening long before an outage ever occurs.

### The Work You Don't See

While outages often get the most attention, most of SEI REMC's work happens when everything is running normally. Crews are consistently out across the service territory inspecting poles, lines, and equipment to identify wear or potential issues before they impact service.

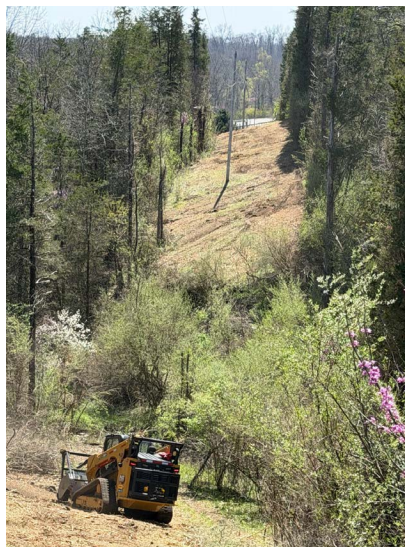
Vegetation management is another essential part of this work. Trees and branches remain one of the leading causes of outages, especially during storms and high

winds. By trimming and maintaining clear rights-of-way, SEI REMC helps reduce those risks and protect the system.

These proactive efforts may not always be visible, but they play a critical role in maintaining dependable service for members year-round.

### Planning for What's Next

Electric systems must be built to support both today's needs and the future of the communities they serve. As homes, businesses, and technology continue to evolve, so does the demand placed on the system.



SEI REMC's engineering and operations teams regularly analyze system performance, identify areas for improvement, and plan upgrades that strengthen the overall grid. These decisions are made with a long-term focus, helping ensure the system remains reliable, efficient, and capable of supporting future growth.

Planning ahead not only supports reliability—it also helps manage costs and maintain stability for members over time.

## Strengthening the System, Piece by Piece

Reliability isn't built through one major project—it's the result of consistent improvements made across the entire system.

Replacing aging equipment, upgrading sections of line, and reinforcing infrastructure all contribute to stronger performance. These upgrades help reduce strain during periods of high demand and improve how the system responds when issues arise.

While each improvement may seem small on its own, together they create a more resilient system that members can depend on every day.



## Technology That Supports Reliability

Modern technology plays an important role in supporting reliable service. Monitoring systems help identify potential issues early, often before they lead to outages, allowing crews to address concerns proactively.

System data also improves how SEI REMC responds when outages do occur. Crews can locate problems more quickly, prioritize repairs, and restore service more efficiently. Communication tools further support this effort by

helping keep members informed during service interruptions.

These technologies work alongside the experience and expertise of SEI REMC employees, strengthening the overall system and improving response capabilities.

## A Local Commitment to Reliability

As a member-owned cooperative, SEI REMC approaches reliability with a focus on the people it serves. Decisions are made locally, with an emphasis on long-term system performance, safety, and service quality.

That means investing in infrastructure before problems arise, maintaining a strong commitment to proactive maintenance, and ensuring that resources are used in ways that directly benefit members.

Because our employees live and work in the same communities, reliability is more than a priority—it's personal.

## When It Matters Most

Even with preparation, outages can still occur—especially during severe weather. When they do, the work completed ahead of time plays a critical role in how quickly and safely service can be restored.

A well-maintained system is easier to repair, and strong infrastructure helps reduce the overall impact of outages. Preparation allows crews to respond efficiently, assess damage accurately, and restore power in a way that prioritizes both safety and reliability.

## Reliability Starts Long Before the Switch

It's easy to think of reliability as something that happens when the power comes back on.

In reality, it begins much earlier—through planning, maintenance, and daily work happening behind the scenes.

So while you may not always see it, your cooperative is always working to ensure your power is there when you need it—today, tomorrow, and into the future.